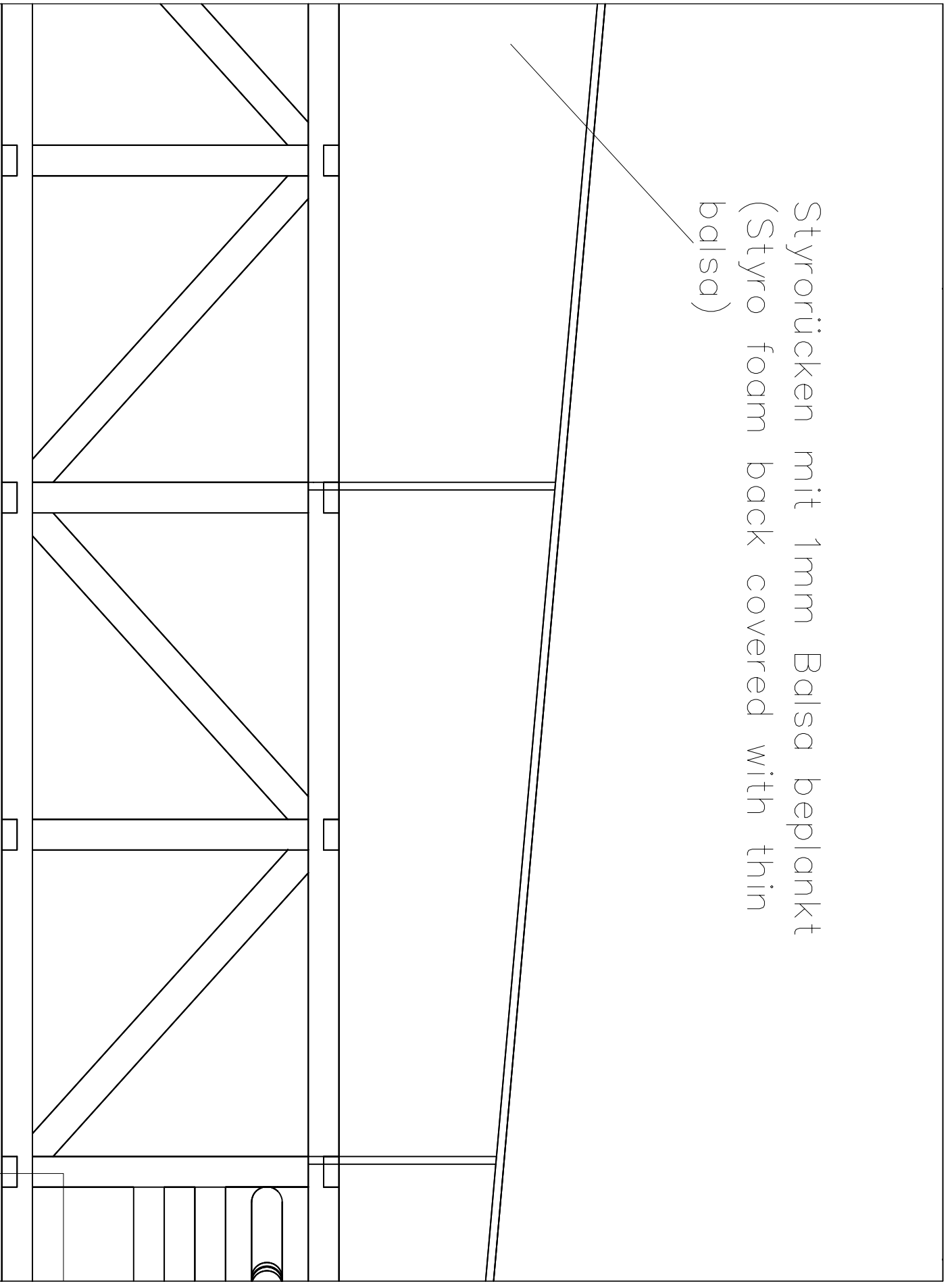
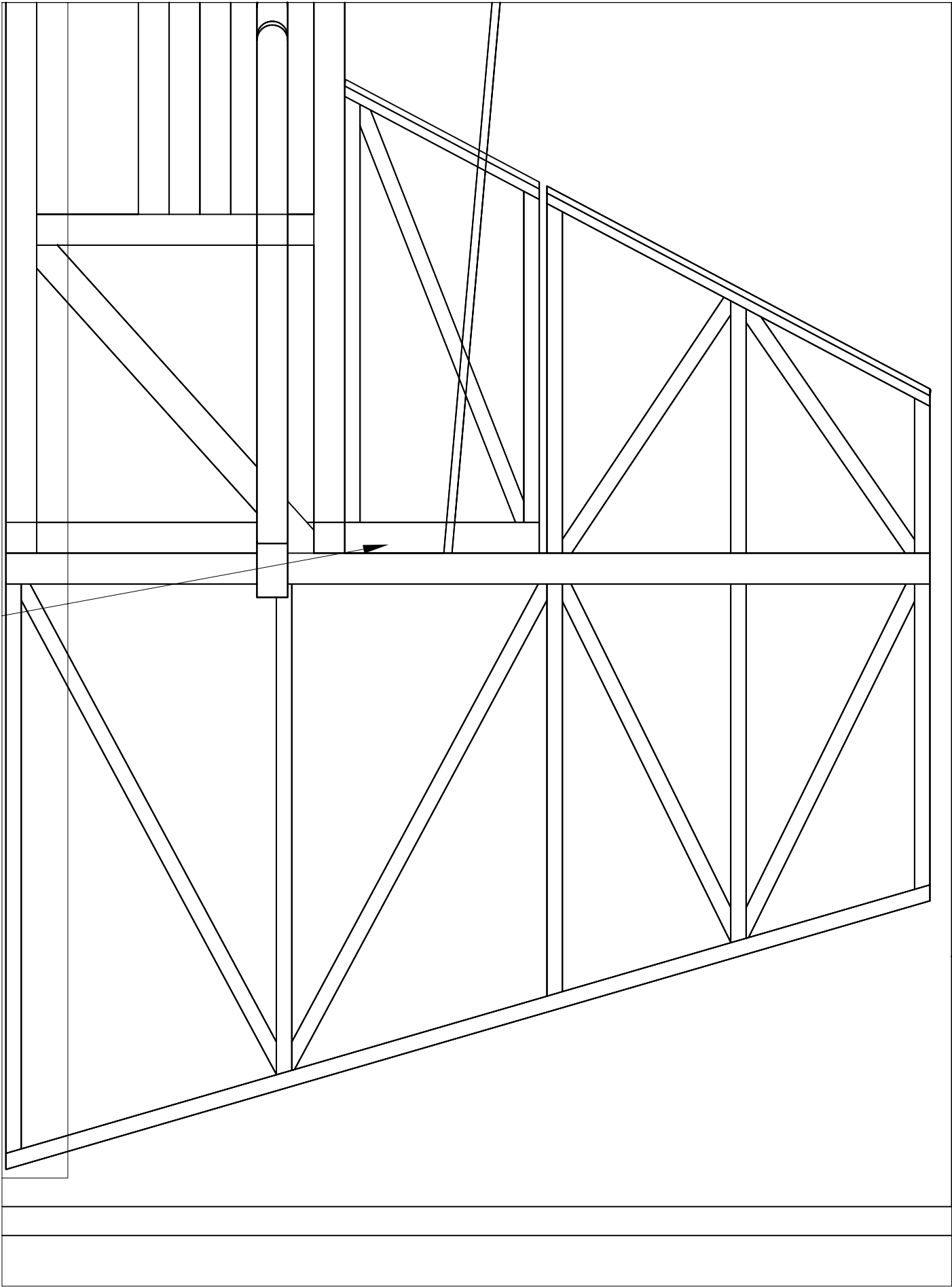
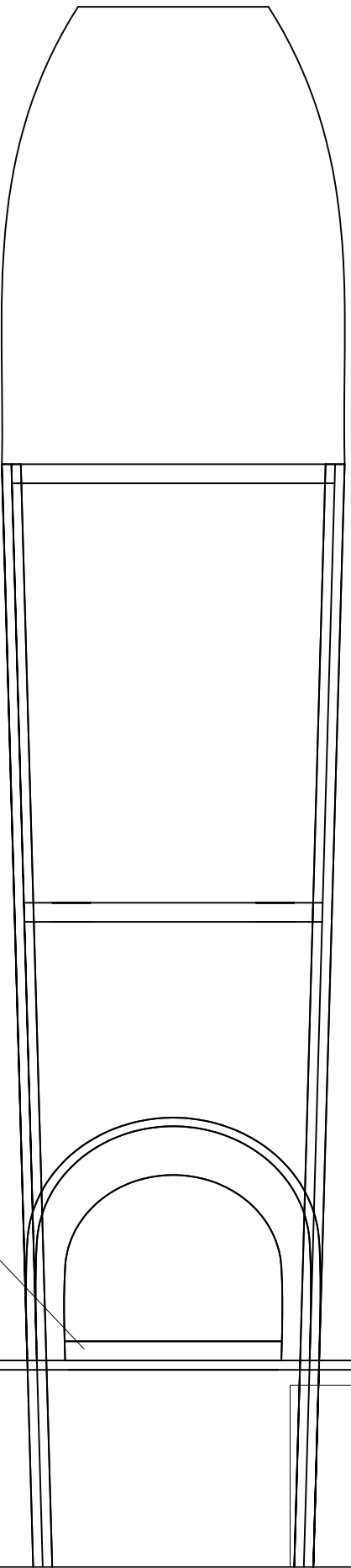


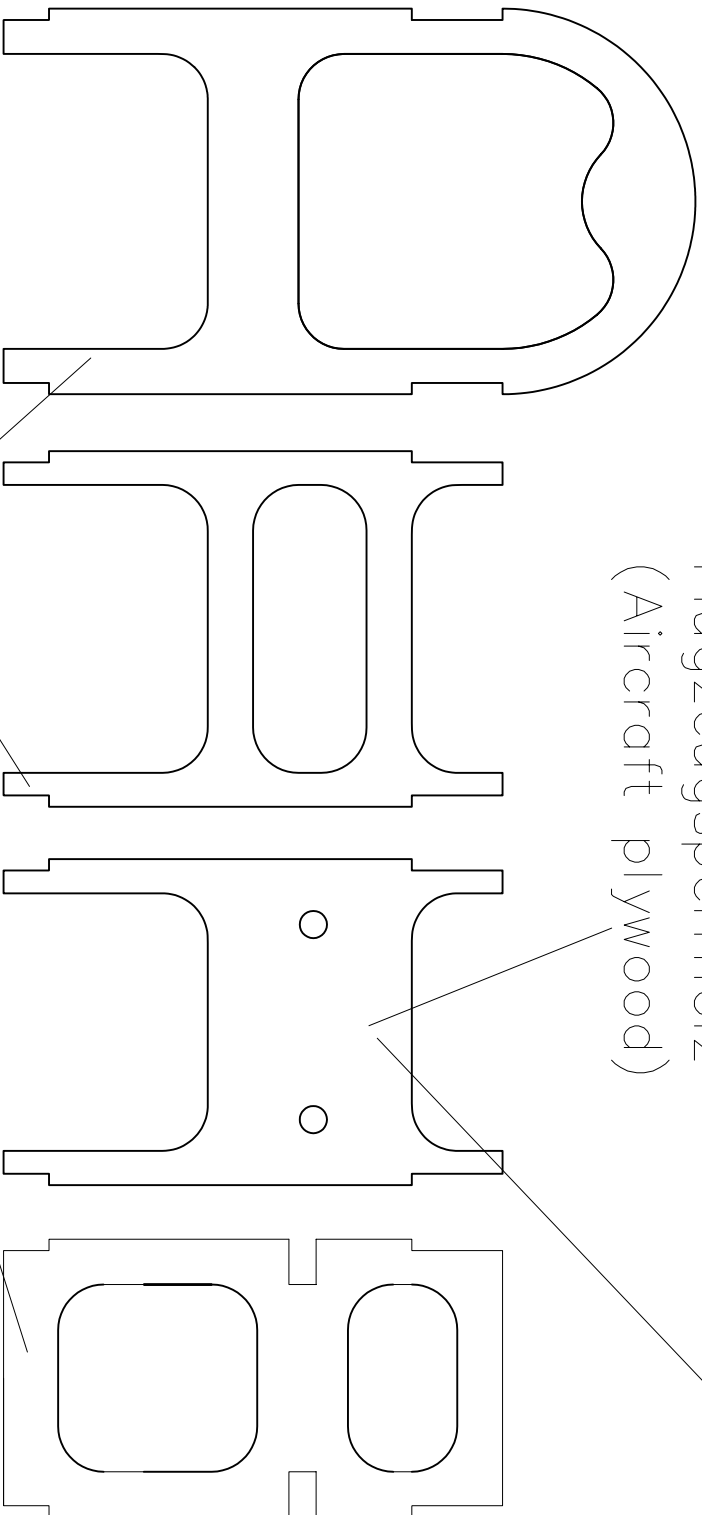
Styrörücken mit 1mm Balsabekplankt  
(Styro foam back covered with thin  
balsa)





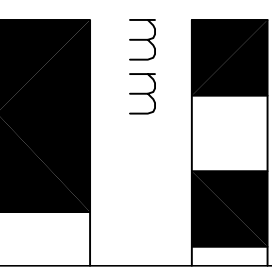


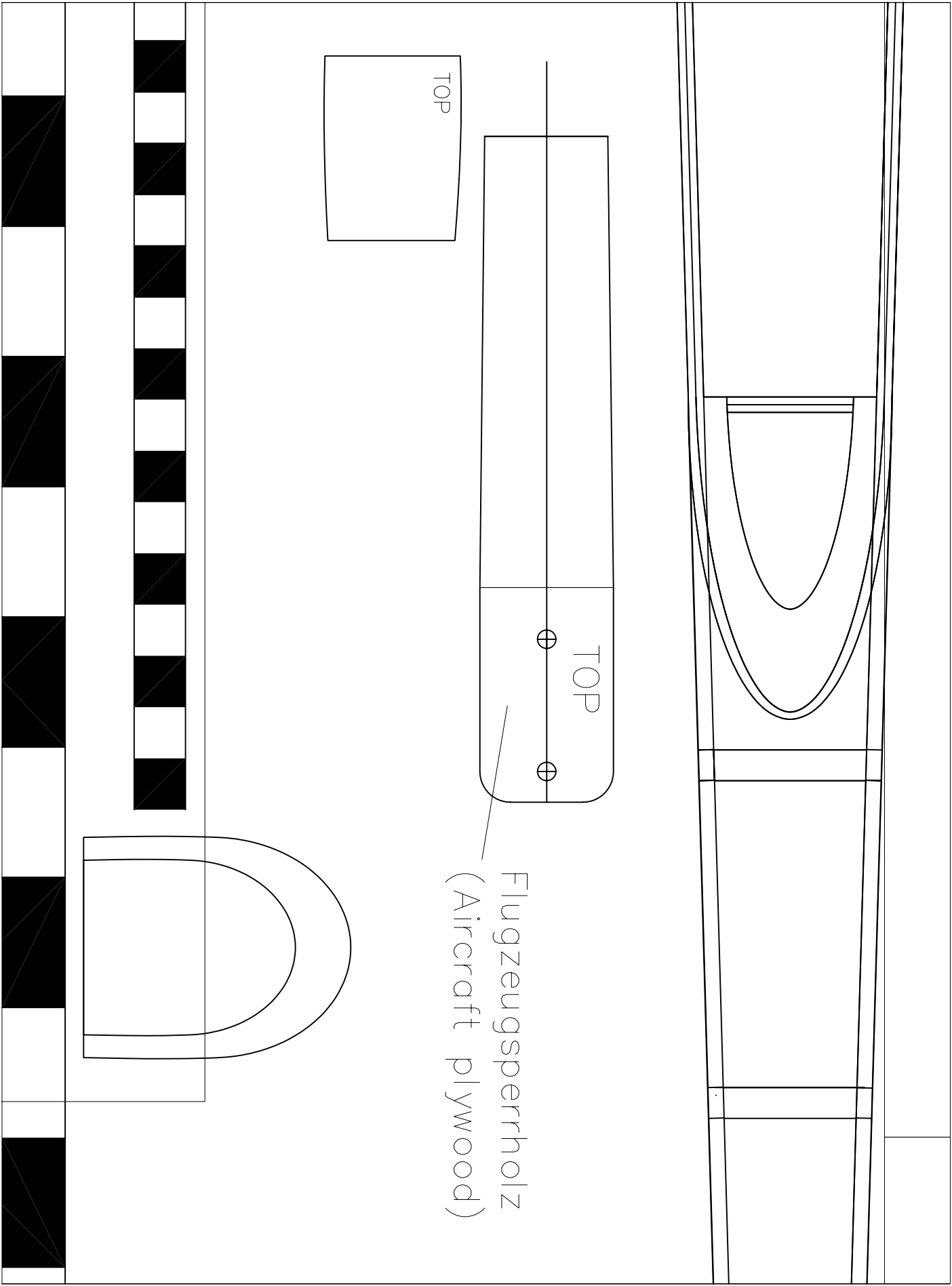
Flugzeugsperrholz  
(Aircraft plywood)

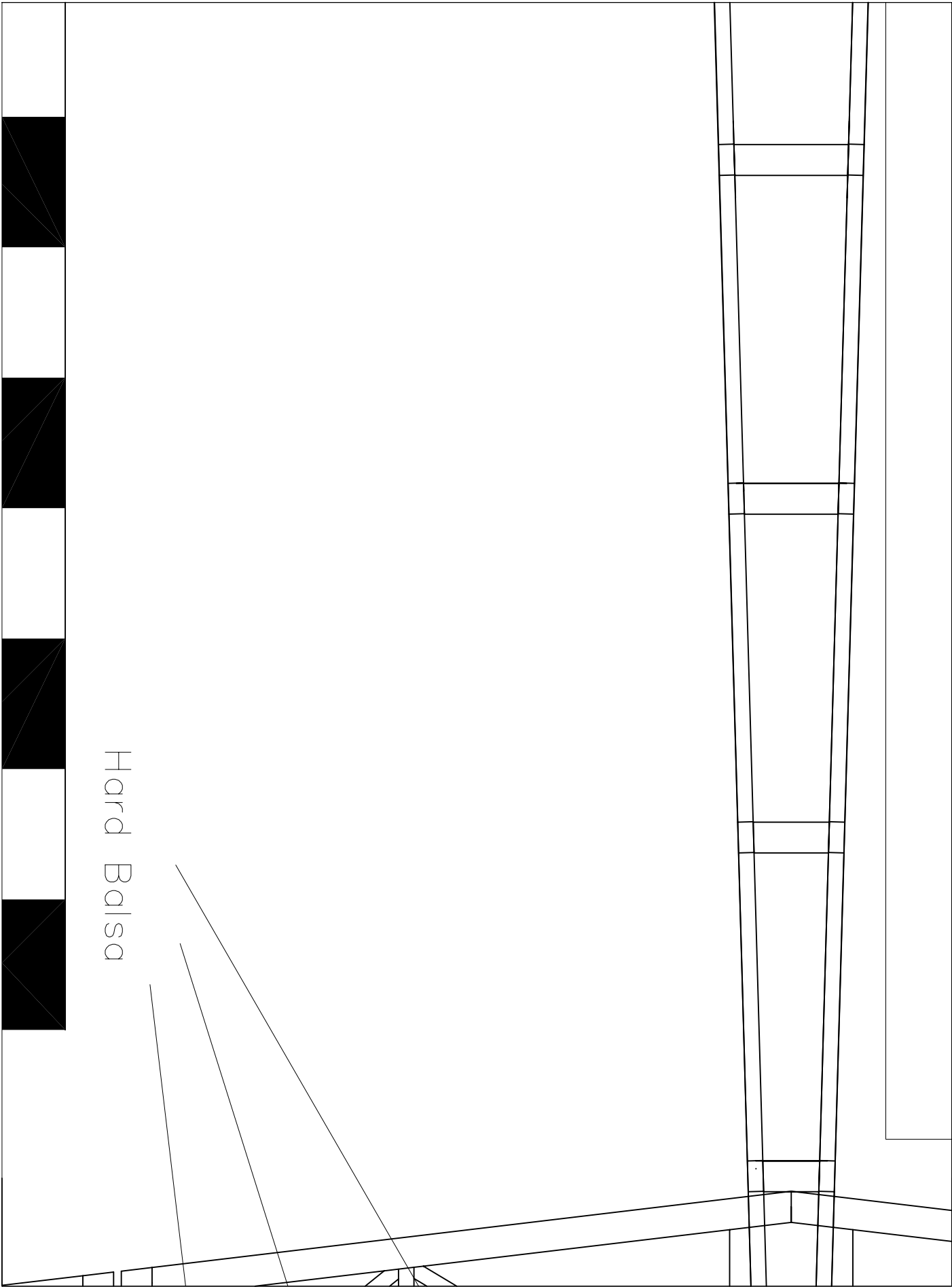


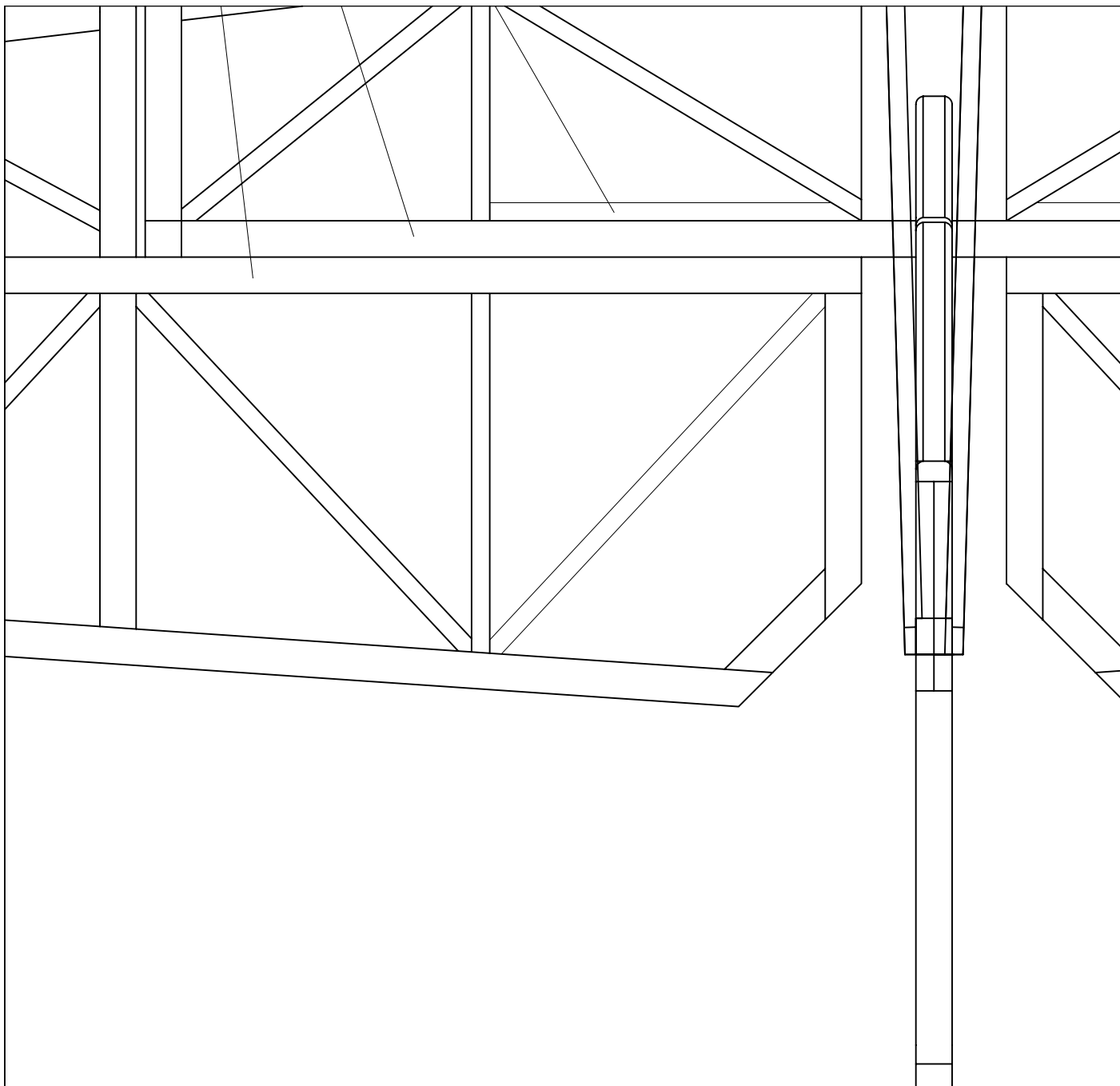
Birke plywood (Birch plywood)

mm



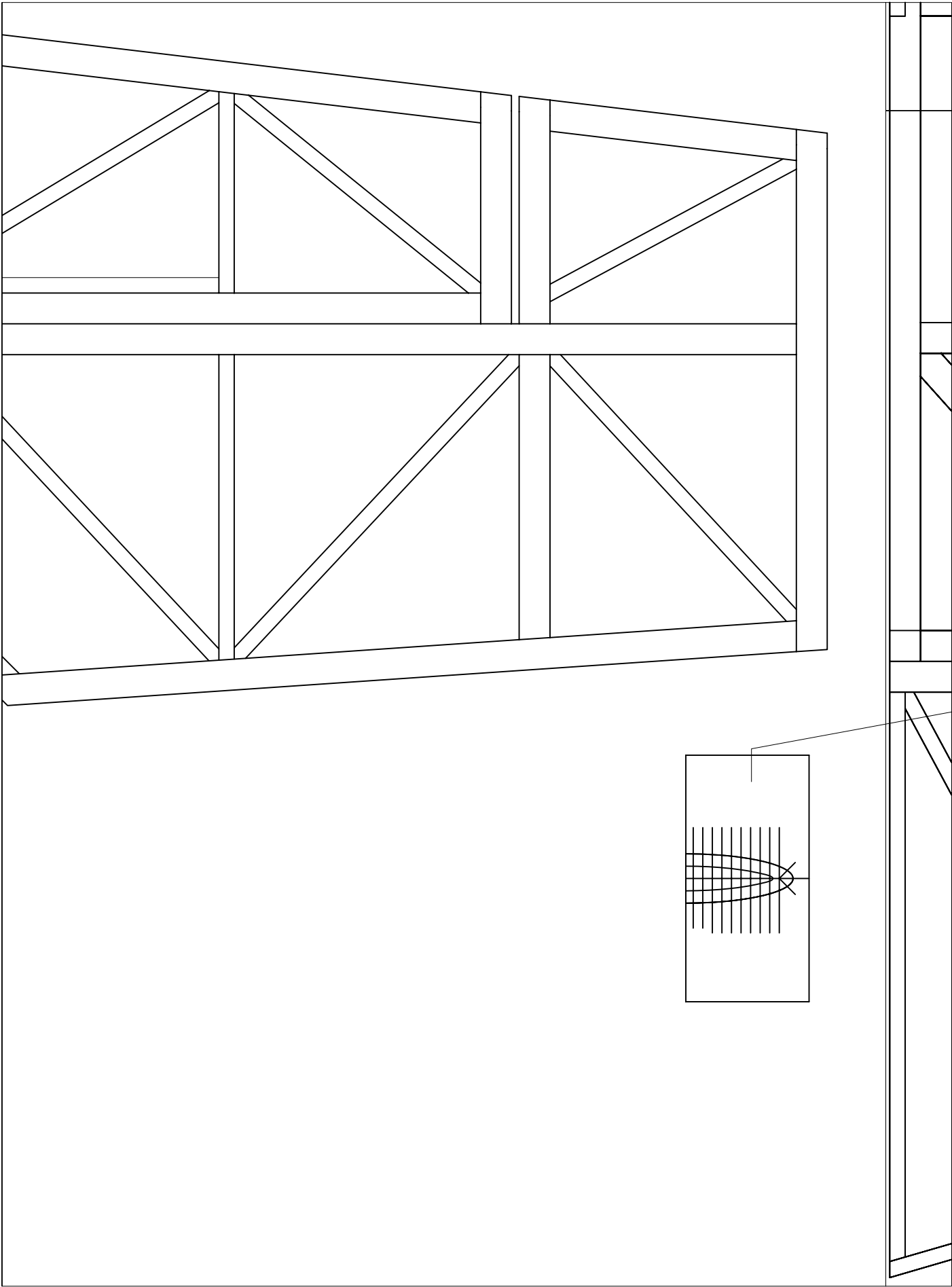


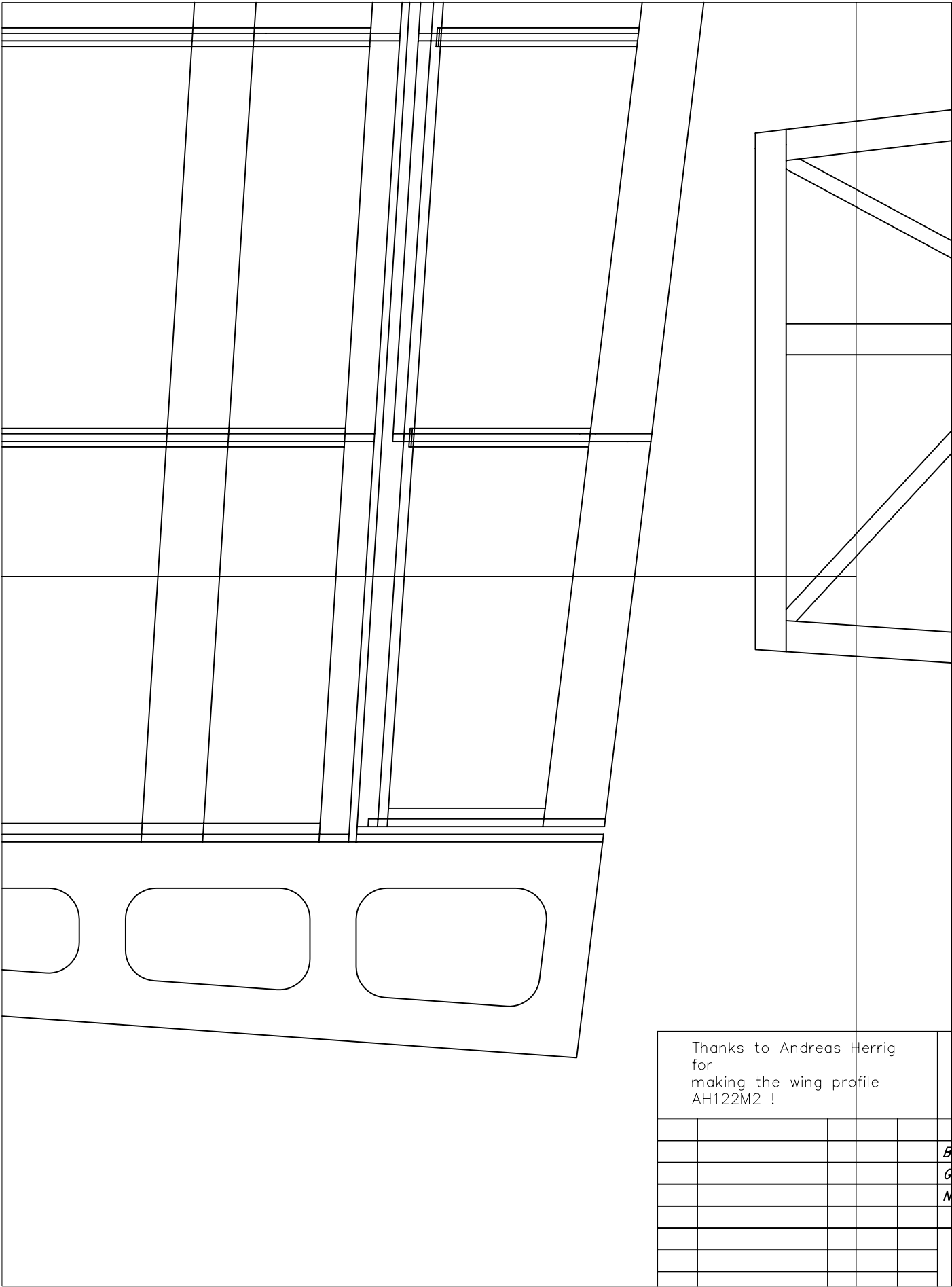




		<b>Maßstab:</b> 1:1	
		Wingspan 930mm (36.6" ) Typhoon 15/10 Hacker Master 18 8-10NicaD/Nimh or 3 Lipoly Weight: 500g 17.6oz	
	<i>Datum</i>	<i>Name</i>	Mini-E-Xtreme Vers 0.2 Copyright by Michael Sillmann
<i>earb.</i>	21.05.04	M.Sillmann	
<i>opr.</i>			
<i>orm</i>			
		NO COMMERCIAL USE!	<i>Blatt</i> 01 <i>Bl.</i>

--	--

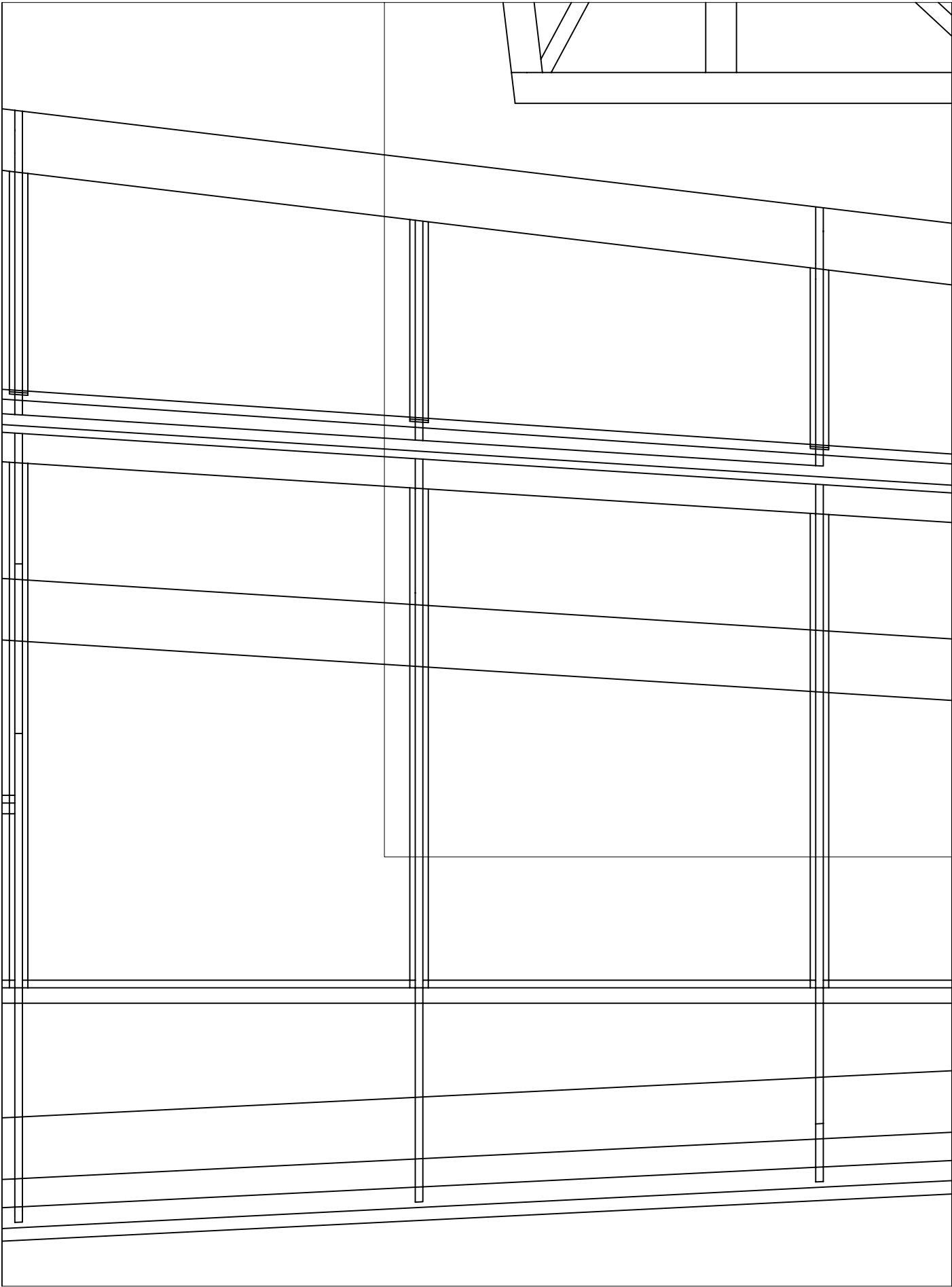


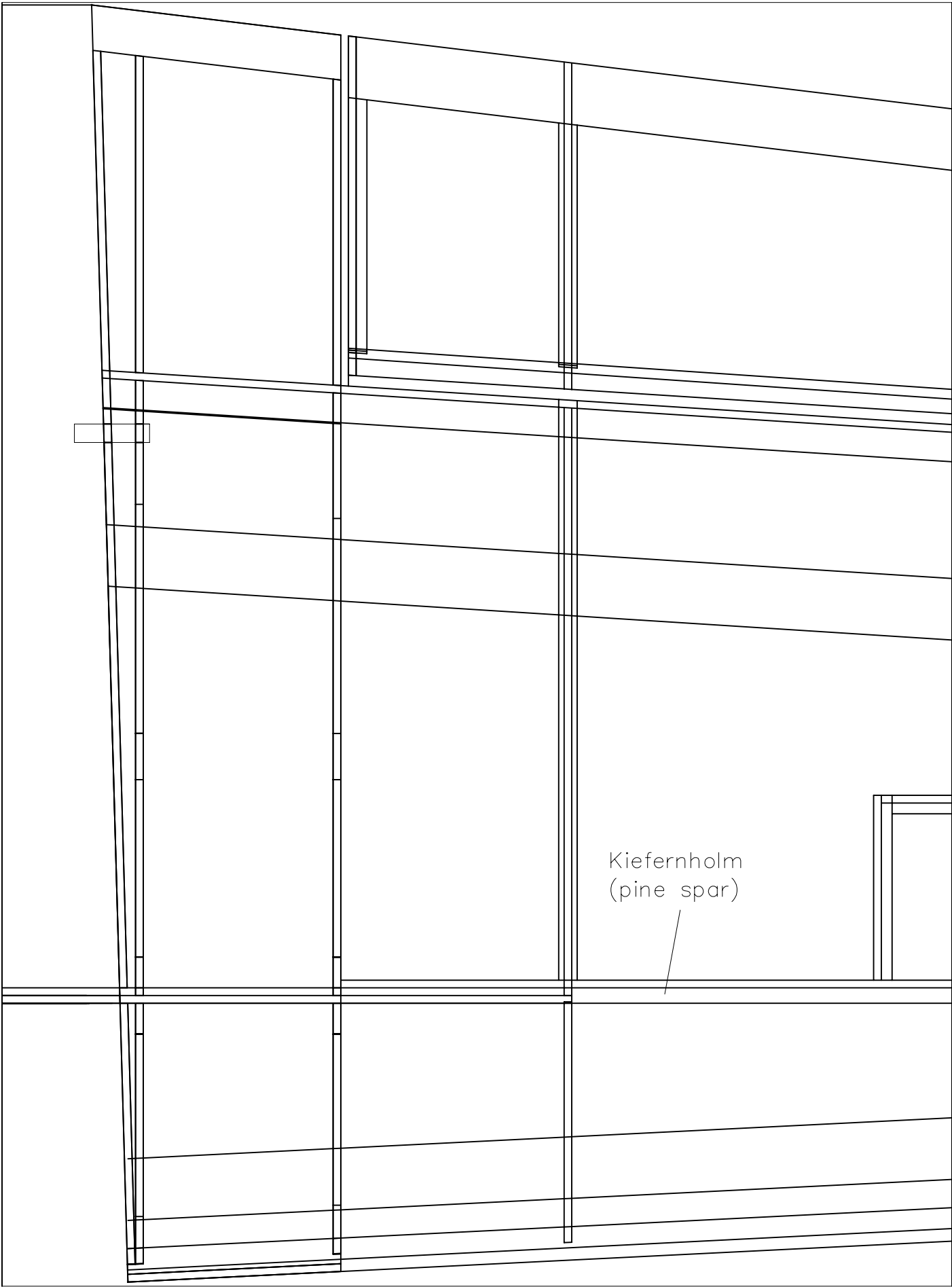


Thanks to Andreas Herrig  
for  
making the wing profile  
AH122M2 !

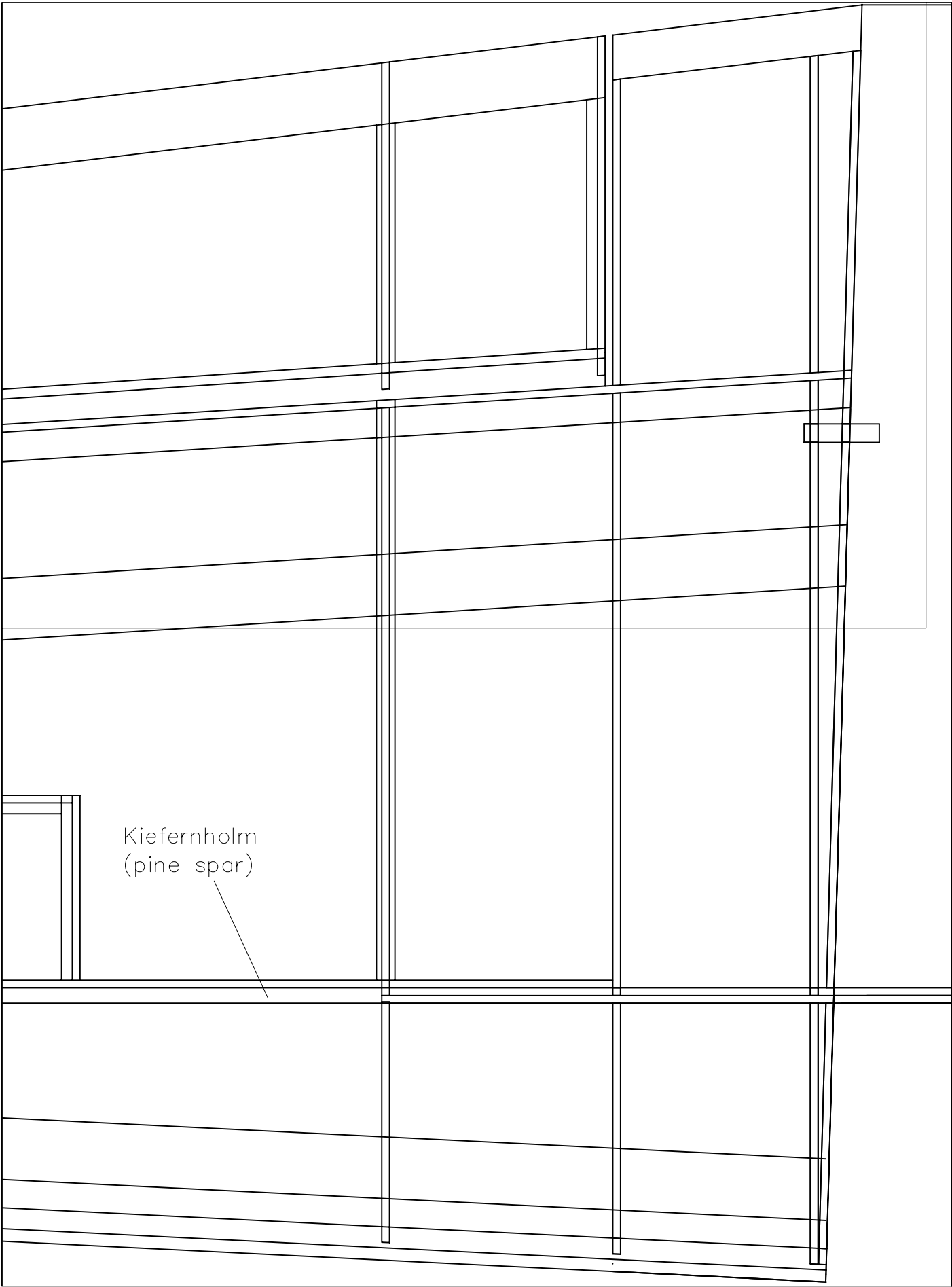
				<i>B</i>
				<i>G</i>
				<i>M</i>







Kiefernholm  
(pine spar)



Kiefernholm  
(pine spar)

inch

